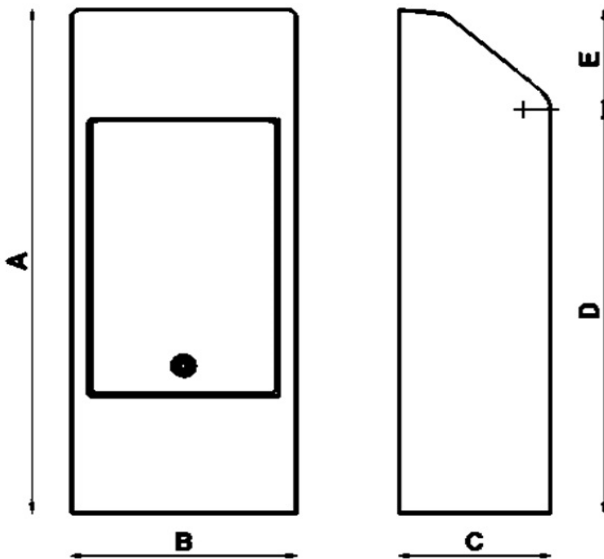


Cabinet for district heating:

Cabinets from Tjæreborg Industri are available in various designs, sizes and colours.



Type	A	B	C	D	E
1	716	290	195	574	142
2	716	290	195	574	142
3	850	350	220	708	142
4	1.000	350	300	858	142
5	900	640	350	885	15

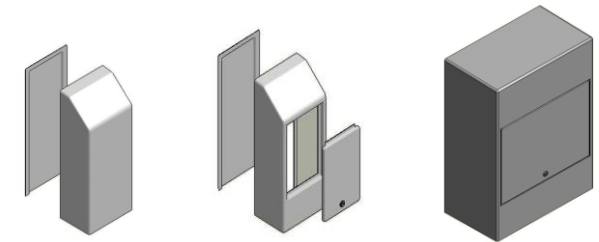
All dimensions are in mm.

The cabinets from Tjæreborg Industri has many advantages.

- Easy and quick mounting.
- Can be mounted on all types of houses.
- No problems with groundwater or rain penetrating through the plinth.
- No breakdown or breakthrough of the plinth or floor.
- The standard colour is grey, but they can be made in several colours (min. number of 20 pieces).
- The cabinets are made of fibre glass and are UV treated.
- Signals from the measure instruments, are easily transmitted to the thermal power stations equipment.



Cabinet type 2.



Type 1

Type 2+3+4

Type 5

All cabinets are with insulation. Cabinet 2-5 are with a door.

For cabinets with doors and insulation there are further advantages:

- Drawing and venting are carried out in the cabinet.
- Heat loss is minimized, as the cabinets are insulated.
- Valves can be operated and serviced through the doors.
- The doors are secured with locks.

The cabinets are designed for the following purposes:

Type 1: Simpel installation

Type 2-5: Simpel installation with access to valves and measuring instruments.